



# VALO™

BY M-ELEC



## ALL YOUR 24V LED STRIP NEEDS

• LED strip • ALU housing • Controllers • Power supplies







VALO Range  
Scan now

## 24V LED Strip Lighting | Indoor Single Colour

### Standard LED Strip



ML-VL-4.8-W5 White 5m  
ML-VL-4.8-NW5 Neutral White 5m  
ML-VL-4.8-WW5 Warm White 5m

ML-VL-4.8-W50 White 50m  
ML-VL-4.8-NW50 Neutral White 50m  
ML-VL-4.8-WW50 Warm White 50m

Total Power Consumed (p/m)	4.8W*
Max Lumen Output (p/m)	(WW) 360lm   (NW) 370lm   (W) 380lm
Efficacy	Up to 79lm/W
Input Voltage	24V DC
Colour Temperature	3000K (WW)   4000K (NW)   6000K (W)
CRI	80
LED Chip & Qty	SMD3528   60/m
Beam Angle	120°
Dimmable	Yes (with correct power supply and controller)
Approx Min Cut	100mm
Maximum Run Length	10m
IP Rating	IP20
Dimensions	L 5m x W 8mm x H 2.2mm / L 50m x W 8mm x H 2.2mm
Temperature Range	-40°C to +70°C
Average Life	40,000 hrs**
Warranty	7 Years
Kit Includes	1x 5m/50m LED strip, 5/25 x connectors

### Long Run LED Strip



ML-VLMX-7.2-W50 White 50m  
ML-VLMX7.2-NW50 Neutral White 50m  
ML-VLMX-7.2-WW50 Warm White 50m

Total Power Consumed (p/m)	7.2W*
Max Lumen Output (p/m)	(WW) 700lm   (NW) 750lm   (W) 750lm
Efficacy	Up to 104lm/W
Input Voltage	24V DC
Colour Temperature	3000K (WW)   4000K (NW)   6000K (W)
CRI	80
LED Chip & Qty	SMD2835   60/m
Dimmable	Yes (with correct power supply and controller)
Approx Min Cut	97mm
Maximum Run Length	20m
IP Rating	IP20
Dimensions	L 50m x W 12mm x H 1.6mm
Temperature Range	-40°C to +70°C
Average Life	40,000 hrs**
Warranty	7 years
Kit Includes	1x 50m LED strip, 25 x connectors

### High Output LED Strip



ML-VL-9.6-W5 White 5m  
ML-VL-9.6-NW5 Neutral White 5m  
ML-VL-9.6-WW5 Warm White 5m

ML-VL-9.6-W50 White 50m  
ML-VL-9.6-NW50 Neutral White 50m  
ML-VL-9.6-WW50 Warm White 50m

Total Power Consumed (p/m)	9.6W*
Max Lumen Output (p/m)	(WW) 720lm   (NW) 740lm   (W) 760lm
Efficacy	Up to 79lm/W
Input Voltage	24V DC
Colour Temperature	3000K (WW)   4000K (NW)   6000K (W)
CRI	80
LED Chip & Qty	SMD3528   120/m
Beam Angle	120°
Dimmable	Yes (with correct power supply and controller)
Approx Min Cut	50mm
Maximum Run Length	10m
IP Rating	IP20
Dimensions	L 5m x W 8mm x H 2.2mm / L 50m x W 8mm x H 2.2mm
Temperature Range	-40°C to +70°C
Average Life	40,000 hrs**
Warranty	7 years
Kit Includes	1x 5m/50m LED strip, 5/25 x connectors

\*Total power consumed including driver    \*\*Average life is calculated on expected average lifespan    3



24V LED Strip Lighting | Indoor Single Colour



Laser LED Strip

ML-VLLZ-10-W50 White 50m  
ML-VLLZ-10-NW50 Neutral White 50m  
ML-VLLZ-10-WW50 Warm White 50m

Total Power Consumed (p/m)	10W*
Max Lumen Output (p/m)	(WW) 910lm   (NW) 989lm   (W) 1080lm
Efficacy	Up to 108lm/W
Input Voltage	24V DC
Colour Temperature	3000K (WW)   4000K (NW)   6500K (W)
CRI	90
LED Chip & Qty	COB   512/m
Beam Angle	120°
Dimmable	Yes (with correct power supply and controller)
Approx Min Cut	62.5mm
Maximum Run Length	10m
IP Rating	IP20
Dimensions	L 50m x W 10mm x H 1.5mm
Temperature Range	-40°C to +70°C
Average Life	40,000 hrs**
Warranty	7 years
Kit Includes	1 x 50m LED strip, 25 x connectors

Colour

Available in WW, NW & W

Dotless LED Output

Continuous light output for a smoother diffusion

Length

Comes in 50m roll

24V LED Strip Lighting | Indoor Single Colour



Ultra Bright LED Strip

ML-VL-11.5-W5 White 5m  
ML-VL-11.5-NW5 Neutral White 5m  
ML-VL-11.5-WW5 Warm White 5m  
ML-VL-11.5-W50 White 50m  
ML-VL-11.5-NW50 Neutral White 50m  
ML-VL-11.5-WW50 Warm White 50m

Total Power Consumed (p/m)	11.5W*
Max Lumen Output (p/m)	(WW) 1470lm   (NW) 1590lm   (W) 1610lm
Efficacy	Up to 140lm/W
Input Voltage	24V DC
Colour Temperature	3000K (WW)   4000K (NW)   6500K (W)
CRI	80
LED Chip & Qty	SMD3014   128/m
Beam Angle	120°
Dimmable	Yes (with correct power supply and controller)
Approx Min Cut	62.5mm
Maximum Run Length	10m
IP Rating	IP20
Dimensions	L 5m x W 10mm x H 1.5mm / L 50m x W 10mm x H 1.5mm
Temperature Range	-40°C to +70°C
Average Life	40,000 hrs**
Warranty	7 years
Kit Includes	1 x 5m/50m LED strip, 5/25 x connectors

High Output Full Spectrum LED Strip

ML-VLCRI-14.4-W5 White 5m  
ML-VLCRI-14.4-NW5 Neutral White 5m  
ML-VLCRI-14.4-WW5 Warm White 5m  
ML-VLCRI-14.4-W50 White 50m  
ML-VLCRI-14.4-NW50 Neutral White 50m  
ML-VLCRI-14.4-WW50 Warm White 50m

Total Power Consumed (p/m)	14.4W*
Max Lumen Output (p/m)	(WW) 880lm   (NW) 980lm   (W) 1010lm
Efficacy	Up to 70lm/W
Input Voltage	24V DC
Colour Temperature	3000K (WW)   4000K (NW)   6000K (W)
CRI	97
LED Chip & Qty	SMD2835   60/m
Beam Angle	120°
Dimmable	Yes (with correct power supply and controller)
Approx Min Cut	100mm
Maximum Run Length	10m
IP Rating	IP20
Dimensions	L 5m x W 10mm x H 1.1mm / L 50m x W 10mm x H 1.1mm
Temperature Range	-40°C to +70°C
Average Life	40,000 hrs**
Warranty	7 years
Kit Includes	1 x 5m/50m LED strip, 5/25 x connectors

Max Output LED Strip

ML-VL-17.2-W50 White 50m  
ML-VL-17.2-NW50 Neutral White 50m  
ML-VL-17.2-WW50 Warm White 50m

Total Power Consumed (p/m)	17.2W*
Max Lumen Output (p/m)	(WW) 2200lm   (NW) 2370lm   (W) 2410lm
Efficacy	Up to 140lm/W
Input Voltage	24V DC
Colour Temperature	3000K (WW)   4000K (NW)   6500K (W)
CRI	90
LED Chip & Qty	SMD3014   192/m
Beam Angle	120°
Dimmable	Yes (with correct power supply and controller)
Approx Min Cut	41.6mm
Maximum Run Length	5m
IP Rating	IP20
Dimensions	L 50m x W 10mm x H 1.5mm
Temperature Range	-40°C to +70°C
Average Life	40,000 hrs**
Warranty	7 years
Kit Includes	1 x 50m LED strip, 25 x connectors

24V LED Strip Lighting | Indoor RGB



24V

7.2W

40,000H

BEAM

IP20

10M RUN

WARRANTY

FREE OSW

Standard RGB LED Strip

ML-VL-7.2-RGB50 Colour Changing 50m

Total Power Consumed (p/m)	7.2W*
Input Voltage	24V DC
Colour Temperature	RGB
LED Chip & Qty	SMD5050   30/m
Beam Angle	120°
Dimmable	Yes (with correct power supply and controller)
Approx Min Cut	166.7mm
Maximum Run Length	10m
IP Rating	IP20
Dimensions	L 50m x W 10mm x H 2mm
Temperature Range	-40°C to +70°C
Average Life	40,000 hrs**
Warranty	7 years
Kit Includes	1 x 50m LED strip, 25 x connectors

24V LED Strip Lighting | Indoor RGB



24V

15W

40,000H

BEAM

IP20

5M RUN

WARRANTY

FREE OSW

RGB Laser LED Strip

ML-VLLZ-15-RGB50 Colour Changing 50m

Total Power Consumed (p/m)	15W*
Input Voltage	24V DC
Colour Temperature	RGB
LED Chip & Qty	Sanan   840/m
Beam Angle	180°
Dimmable	Yes (with correct power supply and controller)
Approx Min Cut	50mm
Maximum Run length	m
IP Rating	IP20
Dimensions	L 50m x W 10mm x H 2.3mm
Temperature Range	-40°C to +70°C
Average Life	40,000 hrs**
Warranty	7 years
Kit Includes	1 x 50m LED strip, 25 x connectors

Standard RGB, W/NW/WW LED Strip

ML-VL-12-RGBW50 Colour Changing 50m  
ML-VL-12-RGBNW50 Colour Changing 50m  
ML-VL-12-RGBWW50 Colour Changing 50m

Total Power Consumed (p/m)	12W*
Max Lumen Output (p/m)	(WW) 650lm   (NW) 700lm   (W) 700lm
Efficacy	Up to 58lm/W
Input Voltage	24V DC
Colour Temperature	RGBWW: 3000K   RGBNW: 4000K   RGBW: 6000K
LED Chip & Qty	SMD2835   320/m
Beam Angle	120°
Dimmable	Yes (with correct power supply and controller)
Approx Min Cut	100mm
Maximum Run Length	10m
IP Rating	IP20
Dimensions	L 50m x W 10mm x H 2mm
Temperature Range	-40°C to +70°C
Average Life	40,000 hrs**
Warranty	7 years
Kit Includes	1 x 50m LED Strip, 25 x connectors



Cutting Service  
Scan now



Online Tools  
Scan now

High Output RGB LED Strip

ML-VL-14.4-RGB50 Colour Changing 50m

Total Power Consumed (pm/)	14.4W*
Input Voltage	24V DC
Colour Temperature	RGB
LED Chip & Qty	SMD5050   60/m
Beam Angle	120°
Dimmable	Yes (with correct power supply and controller)
Min Cut	100mm
Maximum Run Length	10m
IP Rating	IP20
Dimensions	L 50m x W 10mm x H 2mm
Temperature Range	-40°C to +70°C
Average Life	40,000 hrs**
Warranty	7 years
Kit Includes	1 x 50m LED strip, 25 x connectors



24V LED Strip Lighting | Outdoor Single Colour



**Seamless LED Output**

Continuous light output for a smoother diffusion

**Colour**

Available in White (W)

**Weather Protection**

IP65 Rated

Neon LED Strip

ML-VLN-9.6-W20 White 20M

Total Power Consumed (p/m)	9.6W*
Max Lumen Output (p/m)	1220lm
Efficacy	Up to 127lm/W
Input Voltage	24V DC
Colour Temperature	6000K (W)
CRI	80
LED Chip & Qty	SMD2835   128/m
Beam Angle	150°
Dimmable	Yes (with correct power supply and controller)
Min Cut	62.5mm
Maximum Run Length	5m
IP Rating	IP65
Dimensions	L 20m x W 12mm x H 12mm
Temperature Range	-40°C to +70°C
Average Life	40,000 hrs**
Warranty	7 years
Kit Includes	1 x 20m LED strip, 8 x end-cap with hole, 8 x end-cap without hole, 40 x mounting clips, 4 x input cables with 100cm bare wire

24V LED Strip Lighting | Outdoor Single Colour

**24V**

**4.8W**

**40,000H**

**BEAM**

**IP65**

**10M RUN**

**WARRANTY**

**FREE OSW**

Weather Protected Standard LED Strip

ML-VLWP-4.8-W5 White 5m	ML-VLWP-4.8-W10 White 10m
ML-VLWP-4.8-NW5 Neutral White 5m	ML-VLWP-4.8-NW10 Neutral White 10m
ML-VLWP-4.8-WW5 Warm White 5m	ML-VLWP-4.8-WW10 Warm White 10m

Total Power Consumed (p/m)	4.8W*
Max Lumen Output (p/m)	(WW) 350lm   (NW) 360lm   (W) 390lm
Efficacy	Up to 80lm/W
Input Voltage	24V DC
Colour Temperature	3000K (WW)   4000K (NW)   6000K (W)
CRI	80
LED Chip & Qty	SMD3528   60/m
Beam Angle	120°
Dimmable	Yes (with correct power supply and controller)
Min Cut	100mm
Maximum Run Length	10m
IP Rating	IP65
Dimensions	L 5m x W 11mm x H 4mm / L 10m x W 11mm x H 4mm
Temperature Range	-40°C to +70°C
Average Life	40,000 hrs**
Warranty	7 years
Kit Includes	1 x 5m/10m LED strip, 20/40 x saddles, 4/8 x end-caps, 1/2 x connector with cable, 1/2 x end connector seal

Weather Protected High Output LED Strip

ML-VLWP-9.6-W5 White 5m	ML-VLWP-9.6-W10 White 10m
ML-VLWP-9.6-NW5 Neutral White 5m	ML-VLWP-9.6-NW10 Neutral White 10m
ML-VLWP-9.6-WW5 Warm White 5m	ML-VLWP-9.6-WW10 Warm White 10m

Total Power Consumed (p/m)	9.6W*
Max Lumen Output (p/m)	(WW) 680lm   (NW) 690lm   (W) 780lm
Efficacy	Up to 80lm/W
Input Voltage	24V DC
Colour Temperature	3000K (WW)   4000K (NW)   6000K (W)
CRI	80
LED Chip & Qty	SMD3528   120/m
Dimmable	Yes (with correct power supply and controller)
Approx Min Cut	50mm
Maximum Run Length	10m
IP Rating	IP65
Dimensions	L 5m x W 11mm x H 4mm/ L 10m x W 10.5mm x H 4mm
Temperature Range	-40°C to +70°C
Average Life	40,000 hrs**
Warranty	7 years
Kit Includes	1 x 5m/10m LED strip, 20/40 x saddles, 4/8 x end-caps, 1/2 x connector with cable, 1/2 x end connector seal

Weather Protected Ultra Bright LED Strip

ML-VLWP-11.5-W5 White 5m	ML-VLWP-11.5-W10 White 10m
ML-VLWP-11.5-NW5 Neutral White 5m	ML-VLWP-11.5-NW10 Neutral White 10m
ML-VLWP-11.5-WW5 Warm White 5m	ML-VLWP-11.5-WW10 Warm White 10m

Total Power Consumed (p/m)	11.5W*
Max Lumen Output (p/m)	(WW) 1470lm   (NW) 1590lm   (W) 1610lm
Efficacy	Up to 140lm/W
Input Voltage	24V DC
Colour Temperature	3000K (WW)   4000K (NW)   6500K (W)
CRI	90
LED Chip & Qty	SMD3014   128/m
Beam Angle	120°
Dimmable	Yes (with correct power supply and controller)
Approx Min Cut	62.4mm
Maximum Run Length	10m
IP Rating	IP65
Dimensions	L 5m x W 12.5mm x H 4mm / L 10m x W 12.5mm x H 4mm
Temperature Range	-40°C to +70°C
Average Life	40,000 hrs**
Warranty	7 years
Kit Includes	1 x 5m/10m LED strip, 20/40 x saddles, 4/8 x end-caps, 1/2 x connector with cable, 1/2 x end connector seal

24V LED Strip Lighting | Outdoor RGB



24V

7.2W

40,000H

BEAM

IP65

10M RUN

WARRANTY

FREE OSW

Weather Protected Standard RGB LED Strip

ML-VLWP-7.2-RGB5 Colour Changing 5m	
ML-VLWP-7.2-RGB10 Colour Changing 10m	
Total Power Consumed (p/m)	7.2W*
Input Voltage	24V DC
Colour Temperature	RGB
LED Chip & Qty	SMD5050   30/m
Beam Angle	120°
Dimmable	Yes (with correct power supply and controller)
Approx Min Cut	166.7mm
Maximum Run length	10m
IP Rating	IP65
Dimensions	L 5m x W 12.5mm x H 4mm/ L 10m x W 12.5mm x H 4mm
Temperature Range	-40°C to +70°C
Average Life	40,000 hrs**
Warranty	7 years
Kit Includes	1 x 5m/10m LED strip, 20/40 x saddles, 4/8 x end-caps, 1/2 x connector with cable, 1/2 x end connector seal


Weather Protected High Output RGB LED Strip

ML-VLWP-14.4-RGB5 Colour Changing 5m	
Total Power Consumed (p/m)	14.4W*
Input Voltage	24V DC
Colour Temperature	RGB
LED Chip & Qty	SMD5050   60/m
Beam Angle	120°
Dimmable	Yes (with correct power supply and controller)
Approx Min Cut	100mm
Maximum Run length	10m
IP Rating	IP65
Dimensions	L 5m x W 12.5mm x H 4mm
Temperature Range	-40°C to +70°C
Average Life	40,000 hrs**
Warranty	7 years
Kit Includes	1 x 5m LED strip, 20 x saddles, 4 x end-caps, 1 x connector with cable, 1 x end connector seal

Neon LED Strip

ML-VLN-14.4-RGB20 Colour Changing 20m	
Total Power Consumed (p/m)	14.4W*
Input Voltage	24V DC
Colour Temperature	RGB
LED Chip & Qty	SMD2835   120/m
Beam Angle	130°
Dimmable	Yes (with correct power supply and controller)
Approx Min Cut	50mm
Maximum Run Length	5m
IP Rating	IP65
Dimensions	L 50m x W 10mm x H 12mm
Temperature Range	-40°C to +70°C
Average Life	40,000 hrs**
Warranty	7 years
Kit Includes	1x 20m LED strip, 8x end-cap with hole, 8x end-cap without hole, 40x mounting clips, 4 x input cables with 100cm bare wire

LED Strip | Cables




3

YEAR

WARRANTY

RGB Colour

ML-RGBC30	
ML-RGBC100	
Rated Voltage	300V
Suitable Voltage	12-24V DC
Conductor Size	0.38mm <sup>2</sup>
Colour Conductors	Red, green, blue & black
Flame Retardant Grade	VW-1
Rated Temperature	80°C
Length	30m, 100m



3

YEAR

WARRANTY

RGBW Colour

ML-RGBWC30	
ML-RGBWC100	
Rated Voltage	300V
Suitable Voltage	12-24V DC
Conductor Size	0.38mm <sup>2</sup>
Colour Conductors	Green, black, red, white & blue
Flame Retardant Grade	VW-1
Rated Temperature	80°C
Length	30m, 100m

LED Strip | Accessories

Strip to Strip Connectors (5pk)

All suitable for indoor or outdoor flexible strips



ML-SSS-X1 Single colour strip connector suits 8mm wide flexible strips  
ML-SSS-X1-10 Single colour strip connector suits 10mm wide flexible strips  
ML-RGB-SS-X1 RGB strip connector suits 10mm wide flexible strips  
ML-RGBW-SS-X1 RGB strip connector suits 12mm wide flexible strips

Strip-Strip Flex Connectors (5pk)

All suitable for indoor or outdoor flexible strips



ML-CURVE-X1 Single colour strip connector suits 8mm wide flexible strips  
ML-RGB-CURVE-X1 RGB strip connector suits 10mm wide flexible strips

Strip to Strip Power Connectors (5pk)

All suitable for indoor or outdoor flexible strips



ML-SSP-X1 Single colour strip-power connector suits 8mm wide flexible strips  
ML-RGB-SP-X1 RGB strip connector suits 10mm wide flexible strips  
ML-RGBW-SP-X1 RGBW strip connector suits 12mm wide flexible strips

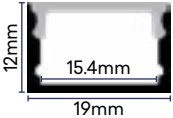
Aluminium Housing



Universal Aluminium Profile (2m)

ML-ALU2-K-V3 Aluminium Profile Kit (2m length)

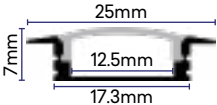
Dimensions	L 2m x W 19mm x H 12mm
2m Kit Includes	1 x 2m Aluminium housing 1 x 2m Opaque diffuser (ML-ALU2-DIFF-V3) 2 x End-caps (ML-ALU2/4-EC-V3)
Minimum Order	2 Kits (minimum due to safe packing methods)
Optional	2m Clear diffuser (ML-ALU2-DIFFC-V3)



Recessed Aluminium Profile (2m)

ML-ALUR-K-V3 Aluminium Profile Kit

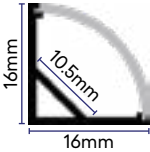
Dimensions	L 2m x W 25mm x H 7mm
Cut Out Width	17.3mm
Kit Includes	1 x 2m Aluminium housing, 1 x 2m Opaque diffuser (ML-ALUR-DIFF-V3), 2 x End-caps (ML-ALUR-EC-V3), 4 x Mounting brackets (ML-ALUR-MB-V3)
Minimum Order	2 Kits (minimum due to safe packing methods)



Corner Aluminium Profile (2m)

ML-ALUCR-K-V3 Aluminium Profile Kit

Dimensions	L 2m x W 16mm x H 16mm
Kit Includes	1 x 2m Aluminium housing, 1 x 2m Opaque diffuser, 2 x End-caps (ML-ALUCR-EC-V3), 3 x Mounting brackets (ML-ALUCR-MB-V3)
Minimum Order	2 Kits (minimum due to safe packing methods)



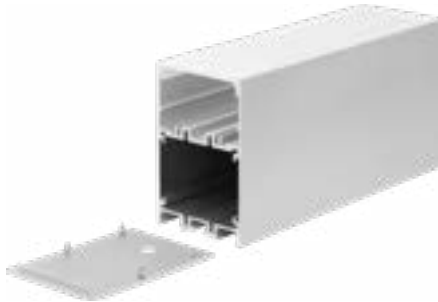
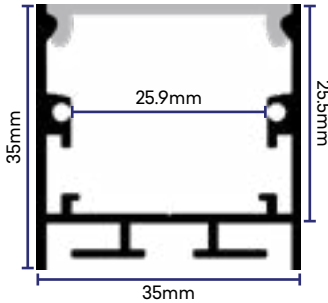
Aluminium Housing



Suspended Aluminium Profile (4m)

ML-ALUSUS-K-V3 Aluminium Profile Kit

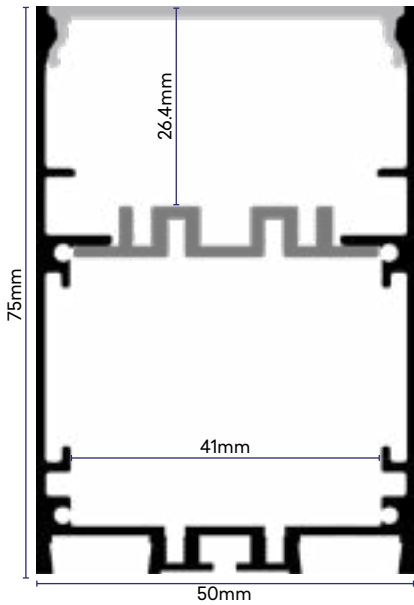
Dimensions	L 4m x W 35mm x H 35mm
Kit Includes	1 x 4m Aluminium housing, 1 x 4m Opaque diffuser (ML-ALUSUS-DIFF-V3), 8 x End-caps (4 x with holes, 4 x without holes), 4 x Suspension kits
Individual Suspension Kit	4 x Roof fixing points, 4 x Profile fixing points, 4 x 1200mm suspension wire 2 x Screws
Minimum Order	1 Kit



Surface Aluminium Profile (4m)

ML-ALU-5075-4M Aluminium Profile Kit

Dimensions	L 4m x W 50mm x H 75mm
Kit Includes	1 x 4m Aluminium profile 1 x 4m Opaque diffuser 4 x End caps, 2 x with hole, 2 x without hole (ML-ALU-5075-EC) 4 x Mounting brackets (ML-ALU-5075-MB)
Minimum Order	1 Kit
Optional	Suspension kit (ML-ALUSUS-KIT-V3)



Aluminium Housing

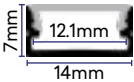


Click-in Aluminium Profile (2m)

ML-ALU-1407-2M Aluminium Profile Kit

Dimensions	L 2m x W 14mm x H 7mm
Kit Includes	1 x 2m Aluminium profile 1 x 2m opaque diffuser 4 x End caps - 2 x with hole, 2 x without hole (ML-ALU-1407-EC) 4 x mounting brackets (ML-ALU-1407-MB)
Minimum Order	2 Kits (minimum due to safe packing methods)

The 1407 is perfect for low profile, rectangular cutouts or slim surface mounted installation requirements and comes with clips allowing pre-wired strips already installed in the profile to take place, saving labour time.

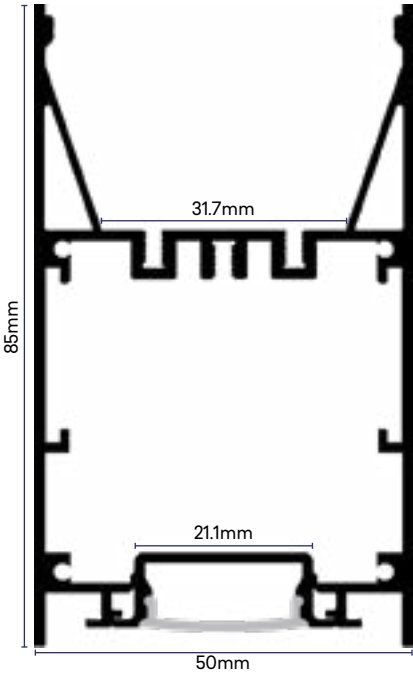


Dual Illumination Aluminium Housing (4m)

ML-ALU-5085-4M Aluminium Profile Kit

Dimensions	L 4m x W 50mm x H 85mm
Kit Includes	1 x 4m Aluminium profile 1 x 4m Opaque diffuser 4 x End caps, 2 x with hole, 2 x without hole (ML-ALU-5085-EC) 4 x Mounting brackets (ML-ALU-5085-MB)
Minimum Order	1 Kit
Optional	Suspension kit (ML-ALUSUS-KIT-V3)

The 5085 profile has both direct and indirect illumination outlets for top and bottom cover. With a large diffuser on toward the ground the internal space (31.7mm) allows for multiple LED strips to be installed and the top allows for another LED strip to wash the ceilings creating incredible illumination with ease.







## LED Controllers

### RGBW Remote Controller

ML-2819S

Colour Control Functions  
Operating Voltage  
Operating Frequency  
IP Rating  
Dimensions  
Required Receiver

RGB  
RGB colour change control, 4 zones (separate or synchronised), 3 different scenes & dimming control  
4.5VDC battery (3x AAA not included)  
434MHz  
IP20  
L 55mm x H 120mm x D 21mm  
ML-VLC-C5

The RGB wireless controller is the 'all round' pick of remotes for RGB LED strips. Working with the ML-VLC-C5 this remote can control colours, 4 zones and a white output. With 10 preset colour changing modes this remote is very universal in its applications.



WARRANTY

### 1-10V Signal Dimmer

ML-DIM-S

M-Elec's plate-mounted 1-10V signal dimmer allows the user to blend the 1-10V controller with traditional dimmers and switch plates seamlessly. Integrating into conventional standard style switch plates and working with one or multiple 1-10V controllers, the ML-DIM-S will dim LED strips and modules perfectly.

\*Dimmer only, plate not included

\* This is not a 240VAC Dimmer, it's a control dimmer

\*IP20



WARRANTY

LED Controllers

0-10V 4 Channel Dimmer

ML-2002



Input Voltage	12-36VDC
Input Control	0-10V signal
Input Channels	4
Output Power	4 x (60-180)W
Output Channels	4
IP Rating	IP20
Dimensions	L 166mm x H 23mm x D 53.4mm

The 0-10V 4 channel dimmer allows full control of strips and other constant voltage products. 0-10V gives superior dimming control with 256 levels on each channel. Capable of working with 1-10V dimmer controllers (ML-DIM-S) and other 0-10V inputs such as Dynalite and C-Bus systems (see manufacturer for details).



5 Channel Controller

ML-VLC-C5



Colour Control	CCT, RGBW, RGB+CCT, DIMMING
Input Voltage	12-24VDC
Output Current	5 x 4A
Input Channels	5
Output Power	5 x 48-96W
Output Type	12-24V constant voltage output
Operating Temperature	-20°C to +50°C
IP Rating	IP20
Dimensions	L 145mm x H 46.5mm x D 16mm
Warranty	7 years

The C5 controller offers remote (RF) or Wi-Fi (Tuya App) control and is able to handle RGB, RGB+W, RGB+W+WW, CCT, or single channel dimming.



24V Power Supplies | Non Dimmable

30W Constant Voltage Non Dimmable



ML-VLPS-C30

Power (Max)	30W
Input Voltage	100-240V
Output Voltage	24V DC*
Outputs	1
IP Rating	IP20
Temperature Range	Ta: 40°C Tc: 85°C (-40°C to +60°C)
Warranty	7 years
Dimensions	L 260mm x W 30mm x H 18.5mm
Kit Includes	1 x Power supply with flex & plug



60W Constant Voltage Non Dimmable



ML-VLPS-C60

Power (Max)	60W
Input Voltage	100-240V
Output Voltage	24V DC*
Outputs	1
IP Rating	IP20
Temperature Range	Ta: 40°C Tc: 85°C (-40°C to +60°C)
Warranty	7 years
Dimensions	L 300mm x W 30mm x H 18.5mm
Kit Includes	1 x Power supply with flex & plug



100W Constant Voltage Non Dimmable



ML-VLPS-C100

Power (Max)	100W
Input Voltage	100-240V
Output Voltage	24V DC*
Outputs	1
IP Rating	IP20
Temperature Range	Ta: 40°C Tc: 85°C (-40°C to +60°C)
Warranty	7 years
Dimensions	L 330mm x W 30mm x H 22mm
Kit Includes	1 x Power supply with flex & plug



150W Constant Voltage Non Dimmable



ML-VLPS-C150

Power (Max)	150W
Input Voltage	100-240V
Output Voltage	24V DC*
Outputs	1
IP Rating	IP20
Temperature Range	Ta: 40°C Tc: 85°C (-40°C to +60°C)
Warranty	7 years
Dimensions	L 368mm x W 30mm x H 22.5mm
Kit Includes	1 x Power supply with flex & plug





24V Power Supplies | Non Dimmable

200W Constant Voltage Non Dimmable

ML-VLPS-C200



Power (Max)	200W
Input Voltage	100-240V
Output Voltage	24V DC*
Outputs	2
IP Rating	IP66
Temperature Range	Ta: 40°C Tc: 85°C (-40°C to +60°C)
Warranty	7 years
Dimensions	L 256mm x W 78mm x H 47mm
Kit Includes	1 x Power supply with flex & plug



300W Constant Voltage Non Dimmable

ML-VLPS-C300



Power (Max)	300W
Input Voltage	100-240V
Output Voltage	24V DC*
Outputs	2
IP Rating	IP66
Temperature Range	Ta: 40°C Tc: 85°C (-40°C to +60°C)
Warranty	7 years
Dimensions	L 276mm x W 78mm x H 47mm
Kit Includes	1 x Power supply with flex & plug



360W Constant Voltage Non Dimmable

ML-VLPS-C360



Power (Max)	360W
Input Voltage	170-265V
Output Voltage	24V DC*
Outputs	2
IP Rating	IP66
Temperature Range	Ta: 40°C Tc: 85°C (-40°C to +60°C)
Warranty	7 years
Dimensions	L 276mm x W 78mm x H 47mm
Kit Includes	1 x Power supply with flex & plug



24V Power Supplies | Dimmable

30W Constant Voltage Dimmable

ML-VLPS-D30



Power (Max)	30W
Dimmable	Yes (Triac, 0/1-10V, Potentiometer, 10V PWM)
Input Voltage	200-240V AC
Output Voltage	24V DC*
Outputs	1
IP Rating	IP66
Temperature Range	Ta: 40°C Tc: 85°C (-40°C to +60°C)
Warranty	7 years
Dimensions	L 260mm x W 32mm x H 20mm



60W Constant Voltage Dimmable

ML-VLPS-D60



Power (Max)	60W
Dimmable	Yes (Triac, 0/1-10V, Potentiometer, 10V PWM)
Input Voltage	200-240V AC
Output Voltage	24V DC*
Outputs	1
IP Rating	IP66
Temperature Range	Ta: 40°C Tc: 85°C (-40°C to +60°C)
Warranty	7 years
Dimensions	L 300mm x W 32mm x H 20mm



100W Constant Voltage Dimmable

ML-VLPS-D100



Power (Max)	100W
Dimmable	Yes (Triac, 0/1-10V, Potentiometer, 10V PWM)
Input Voltage	200-240V AC
Output Voltage	24V DC*
Outputs	1
IP Rating	IP66
Temperature Range	Ta: 40°C Tc: 85°C (-40°C to +60°C)
Warranty	7 years
Dimensions	L 330mm x W 32mm x H 20mm



150W Constant Voltage Dimmable

ML-VLPS-D150



Power (Max)	150W
Dimmable	Yes (Triac, 0/1-10V, Potentiometer, 10V PWM)
Input Voltage	200-240V AC
Output Voltage	24V DC*
Outputs	1
IP Rating	IP66
Temperature Range	Ta: 40°C Tc: 85°C (-40°C to +60°C)
Warranty	7 years
Dimensions	L 368mm x W 32mm x H 23mm



24V Power Supplies | Dimmable



200W Constant Voltage Dimmable

ML-VLPS-D200

Power (Max)	200W
Dimmable	Yes (Triac, 0/1-10V, Potentiometer, 10V PWM)
Input Voltage	200-240V AC
Output Voltage	24V DC*
Outputs	1
IP Rating	IP66
Temperature Range	Ta: 40°C Tc: 85°C (-40°C to +60°C)
Warranty	7 years
Dimensions	L 256mm x W 78mm x H 47mm

12V Power Supplies | Non Dimmable



200W Constant Voltage Non Dimmable

ML-PSWP200-X2

Power (Max)	200W
Input Voltage	240V
Output Voltage	12V DC*
Outputs	2
IP Rating	IP66
Warranty	3 years
Dimensions	L 256mm x W 78mm x H 47mm
Kit Includes	1 x Power supply with flex & plug

300W Constant Voltage Dimmable

ML-VLPS-D300



Power (Max)	300W
Dimmable	Yes (Triac, 0/1-10V, Potentiometer, 10V PWM)
Input Voltage	200-240V AC
Output Voltage	24V DC*
Outputs	1
IP Rating	IP66
Temperature Range	Ta: 40°C Tc: 85°C (-40°C to +60°C)
Warranty	7 years
Dimensions	L 276mm x W 78mm x H 47mm



300W Constant Voltage Non Dimmable

ML-PSWP300-X2

Power (Max)	300W
Input Voltage	240V
Output Voltage	12V DC*
Outputs	2
IP Rating	IP66
Temperature Range	Ta: 40°C Tc: 85°C (-40°C to +60°C)
Warranty	3 years
Dimensions	L 276mm x W 78mm x H 47mm
Kit Includes	1 x Power supply with flex & plug

360W Constant Voltage Dimmable

✓ Order In Only

ML-VLPS-D360



Power (Max)	360W
Dimmable	Yes (Triac, 0/1-10V, Potentiometer, 10V PWM)
Input Voltage	200-240V AC
Output Voltage	24V DC*
Outputs	1
IP Rating	IP66
Temperature Range	Ta: 40°C Tc: 85°C (-40°C to +60°C)
Warranty	7 years
Dimensions	L 276mm x W 78mm x H 47mm



12V Power Supplies | Dimmable

60W Constant Voltage Dimmable



ML-PSD60-X2

Power (Max)	60W
Dimmable	Yes (Triac, 0/1-10V, Potentiometer, 10V PWM)
Input Voltage	200-240V AC
Output Voltage	12V DC*
Outputs	1
IP Rating	IP66
Warranty	3 years
Dimensions	L 300mm x W 32mm x H 20mm



100W Constant Voltage Dimmable



ML-PSD100-X2

Power (Max)	100W
Dimmable	Yes (Triac, 0/1-10V, Potentiometer, 10V PWM)
Input Voltage	200-240V AC
Output Voltage	12V DC*
Outputs	1
IP Rating	IP66
Warranty	3 years
Dimensions	L 330mm x W 32mm x H 20mm



150W Constant Voltage Dimmable



ML-PSD150-X2

Power (Max)	150W
Dimmable	Yes (Triac, 0/1-10V, Potentiometer, 10V PWM)
Input Voltage	200-240V AC
Output Voltage	12V DC*
Outputs	1
IP Rating	IP66
Warranty	3 years
Dimensions	L 368mm x W 32mm x H 23mm



At **M-Elec** our goal is to not to just supply electricians with the best products but the best services as well. Be part of the electrical community today.

Sign up to have access to:

- Free 3 Year OSW
- Tech Support
- Exclusive Promos
- Reviews & Tests
- On the Tools Tips

Register for free now  
[sparkysunited.com.au/warranty](https://sparkysunited.com.au/warranty)





## LED STRIP CALCULATORS

Easy to use online tools that can help make purchasing LED strip lighting simple!



Online Tools  
Scan now



## LED STRIP & ALU CUTTING SERVICE

We'll cut - We'll solder - We'll deliver



Cutting Service  
Scan now